

PREE Laboratories - South
545 SW 2nd St, #202, Corvallis, OR 97333
541-257-5002 / OLCC 010-10087092BDA / www.PREElab.com

Blueberry THCA

Confident Cannabis ID: 2303PREE0255.1106

Sample ID: C230421-04

Matrix: Useable Marijuana

METRC Batch #:

Sampling Method/SOP: FSOP #101

Date Sampled: NA

Date Accepted: 03/15/23

Harvest/Process Lot ID:

Batch ID:

Batch Size (g):

Unit for Sale:

Harvest/Production Date:

Cannabinoid Analysis

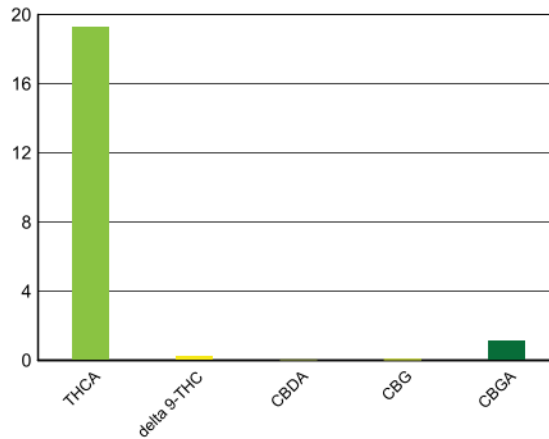
FOR INFORMATIONAL USE ONLY - NOT FOR REGULATORY PURPOSES

Date/Time Extracted: 03/16/23 08:20

Date/Time Analyzed: 03/16/23 11:29

Analysis Method/SOP: LSOP #303

Cannabinoids	LOQ(%)	mg/g	% weight	Cannabinoid Profile
Total THC ((THCA*0.877)+Δ9THC)		171	17.1	
Total CBD ((CBDA*0.877)+CBD)		<LOQ	<LOQ	
THCA	0.150	193	19.3	
delta 9-THC	0.150	1.90	0.190	
delta 8-THC	0.150	< LOQ	< LOQ	
THCV	0.150	< LOQ	< LOQ	
CBGA	0.150	10.9	1.09	
CBDA	0.150	< LOQ	< LOQ	
CBD	0.150	< LOQ	< LOQ	
CBDV	0.150	< LOQ	< LOQ	
CBN	0.150	< LOQ	< LOQ	
CBG	0.150	< LOQ	< LOQ	
CBC	0.150	< LOQ	< LOQ	
CBDV-A	0.150	< LOQ	< LOQ	
CBL	0.150	< LOQ	< LOQ	
Sum of tested Cannabinoids	0.150	206	20.6	



Moisture Content

Date/Time Analyzed: 03/16/23 10:23
Analysis Method/SOP: LSOP #301

Moisture: 9.880 %

"Total THC" and "Total CBD" are calculated values and are an Oregon reporting requirement (OAR 333-064-0100). For Cannabinoid analysis, only delta 9-THC, delta 8-THC, THCA, CBD and CBDA are ORELAP accredited analytes. Cannabinoid values reported for plant matter are dry weight corrected; Oregon Water Activity action level is 0.65Aw and Oregon Moisture Content action level is 15%. Samples above limit will be highlighted RED; FD = Field Duplicate; LOQ = Limit of Quantitation.

Carson Newkirk
Laboratory Manager - 3/17/2023

Page 1 of 2

PREE Laboratories - South
545 SW 2nd St, #202, Corvallis, OR 97333
541-257-5002 / OLCC 010-10087092BDA / www.PREElab.com

Quality Control

Batch: C23C081 - LSOP #303 Cannabinoid Quantification

Blank(C23C081-BLK1)			Extracted: 03/16/23 08:20			Analyzed: 03/16/23 10:19			
Analyte	Result	LOQ	Recovery Limits	Notes	Analyte	Result	LOQ	Recovery Limits	Notes
CBDV-A	< LOQ	0.150 (%)	< LOQ		CBDV	< LOQ	0.150 (%)	< LOQ	
CBDA	< LOQ	0.150 (%)	< LOQ		CBGA	< LOQ	0.150 (%)	< LOQ	
CBG	< LOQ	0.150 (%)	< LOQ		CBD	< LOQ	0.150 (%)	< LOQ	
THCV	< LOQ	0.150 (%)	< LOQ		CBN	< LOQ	0.150 (%)	< LOQ	
delta 8-THC	< LOQ	0.150 (%)	< LOQ		delta 9-THC	< LOQ	0.150 (%)	< LOQ	
CBL	< LOQ	0.150 (%)	< LOQ		CBC	< LOQ	0.150 (%)	< LOQ	
THCA	< LOQ	0.150 (%)	< LOQ		Sum of tested Cannabinoids	< LOQ	0.150 (%)	< LOQ	

LCS(C23C081-BS1)			Extracted: 03/16/23 08:20			Analyzed: 03/16/23 10:33			
Analyte	% Recovery	LOQ	Recovery Limits	Notes	Analyte	% Recovery	LOQ	Recovery Limits	Notes
CBDA	96.6	0.150 (%)	90-110		CBD	98.7	0.150 (%)	90-110	
delta 8-THC	98.2	0.150 (%)	90-110		delta 9-THC	98.2	0.150 (%)	90-110	
THCA	97.4	0.150 (%)	90-110						



Carson Newkirk
Laboratory Manager - 3/17/2023

Page 2 of 2